



A & T Medical Systems

Dental Care Products



www.atmedical.in

COMPANY PROFILE



A & T Medical Systems

ISO 9001:2015
certified company

WELCOME to the world of **A&T Medical Systems** a group of professional's - Biomedical Experts having experience in this field from **last 12 years**. **A&T Medical Systems** most probably the fastest growing Indian company, Trading and exporting hospital/medical/scientific/laboratory equipment / dental equipment's, devices and instruments. We are worldwide exporter of Orthopedic Implants/Instruments, Anesthesia Products, Hospital Furniture, Stainless Steel Hospital, Hollowware and Sterilizers, Autoclaves, Microscopes & Projectors, Cold Chain Equipment's, Examination Lights, Diagnostic Instruments, Suction Units, Shadow less Lamps, Surgical Rubber Goods, Rehabilitation Aids, Lab Equipment's, Medical Disposables, Surgical Needles, UV Sterilizers, Weighing Balances etc. Our healthcare products are used in hospitals, clinics, laboratory, nursing homes etc.

“We are also having dental division; we provide complete dental solution like supply of material, installation, commissioning of dental chair and various equipment's. We are in capacity to supply and fulfill the demand of dentist“

One Step Source and solution company :-

The possibility of procuring over 1000 products from one source only results into a big saving of precious time as well as money, particularly when a large number of the offered products are CE marked, and a few US FDA510(K) approved by our esteemed manufactures . Our channel partners and manufactures provide best quality of Material to the end user, **We are the direct importer and distributor of medical equipment's of our brand in India**, Which help our customer to save money and time.





CATALOG INDEX

• Dental Chair	- 1
• Handpiece Series	- 2 - 4
• Light Cure Series	- 5
• Endo motor Series & accessories	- 6 - 8
• Implant System	- 9 - 10
• Autoclaves Series	- 11 - 12
• X-Ray & RVG Accessories	- 12 - 13
• Oral Camera Intra Oral Light & Accessories	- 14
• Suction Machines	- 15 - 17
• Medical Waste Management	- 18
• Operation Theatre Equipments & Accessories	- 19 - 20

A & T BRAVO PLUS



A & T - BRAVO PLUS - Standard Configuration

- PU Leather cushion with Metal ABS base
 - High Speed Handpiece tubing with connector (4 hole)
 - High speed handpiece tubing with connector (2 hole)
 - 3 Way Syringe (Cold & Hot)
 - Strong & weak Suction
 - Adjustable headrest
 - Double armrest
 - Down Mounted tool tray
 - Water suction & Saliva Ejector
 - Reflector LED Sensor lamp
 - 24V OPG film Viewer
 - 24V DC Taiwan Motor
 - Assistant control system with control pannel
 - Water purified & heating System
 - Water bottle
 - Tissue box
 - Auto water supply & flush cuspidor system
 - Glass Cuspidor
 - Multi Functional foot peddle
 - Dentist stool
 - Solenoid Valve
 - Linked movement chair frame
- Power Supply Voltage : 220V-50HZ
• DC Motor's Voltage : 24 V
• Air Source Pressure : 0.55 MPA
• Water Source Pressure : 0.2Mpa~0.4Mpa

DENTAL CHAIR

A & T BRAVO



A & T - BRAVO - Standard Configuration

- Dental stool with rotating arm
 - Collision-avoidance System
 - (Chair frame & Backrest Assistant tool tray)
 - Auto flush & Water supply, constant temperature system
 - Assistant control System
 - 24V DC Taiwan Motor
 - High- Grade Imported electromagnetic valve (ODE)
 - US Water & Air Pipe
 - OPG Film Viewer
 - LED Sensor Lamp
 - Flat Bottom Glass Cuspidor
 - Strong & Weak Suction
 - Pure Water System
 - 3 Way Syringe
 - 2 hole hand-piece tube
 - All Rubber PU leather
 - Multi Functional foot peddle
 - External ground box
 - Painted Chair frame & all metal base
-
- Power Supply Voltage : 220V-50HZ
 - DC Motor's Voltage : 24 V
 - Air Source Pressure : 0.55 MPA
 - Water Source Pressure : 0.2Mpa~0.4Mpa

A & T - 2 STAR



A & T - 2 STAR - Standard Configuration

- Electrically operated Luxury dental chair with 2 fixed programs: Zero and working position.
- 3 Way Chair controls: Feather touch Hand, Assistant Panel & Foot control.
- Multifunction Foot control, Adjustable Headrest.
- Seamless seat upholstery with PU molded collapsible armrest.
- Timer controlled auto water for tumbler & Ceramic / Glass spittoon.
- Operating Light with 2 intensity : High & Low.
- Modular under hang delivery system with 2 Arotor & Micro Motor Provision.
- Instrument Arm with Pneumatic Lock system with Large Instrument Tray.
- 2 Nos. of 3-Way Syringes (One for Assistance side).
- Saliva Ejector with low suction.
- LED Film Viewer Light.
- Doctor's comfort Stool with Adjustable feature.

HANDPIECE SERIES



LED 90B

RPM 4,50,000

High Speed 3 way spray LED light

Ceramics Bearing

Air pressure at the back end

0.20-0.22Mpa(2 Hole)

Chuck type :Push Button

Noise < 68db



LED 45

RPM 4,50,000 @ 45

High Speed 1 way spray LED light

Ceramics Bearing

Air pressure at the back end

0.20-0.22Mpa(2 Hole)

Chuck type :Push Button

Noise < 68db



ST 90PB

RPM 4,00,000

High Speed 1 way spray super torque

Ceramics Bearing

Air pressure at the back end

0.20-0.22Mpa(2 Hole)

Chuck type :Push Button

Noise < 68db



PEDO

RPM -1,00,000

Low Speed Ultra Mini Head

Ceramics Bearing

Air pressure at the back end

0.20-0.22Mpa(2 Hole)

Chuck type :Push Button

Noise < 68db



High Speed Air Rotor Handpiece



ST 90CB

RPM 3,50,000

High Speed standard head

Ceramics Bearing

Air pressure at the back end

0.20-0.22Mpa(2 Hole)

Chuck type :Push Button

Noise < 68db

LOW SPEED HANDPIECE SERIES



CAN-90

ST-90

AIR-90

Micro motor with control box



Brushless motor

High quality wire & electrical systems

minimum 35000 to 70000 rpm lab motor

CONTRA ANGLE IMPLANT HANDPIECE & LIGHT CURE SERIES

Contra Angle Implant Hand Pieces



LED curing light wire & wireless

Function :

- Covered by green plastic shell
- 5W Big power LED
- High articulation optical fiber
- Working modes: strong, gradually strong, flashing
- Automatic Standby, Automatic shutdown
- Can set the working time, reverse time
- Solidify all brands of resin materials
- Can also be plugged in power to work directly



CL-90

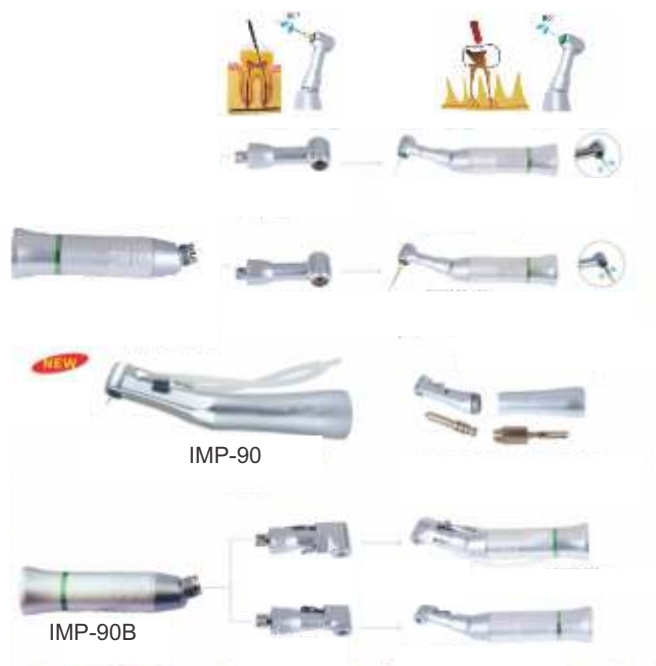


10mm Light guide stick
18500mAh lithium battery



Bleaching Light

- Can be mounted dental chair
- Very effective
- 6000 Lux



IMP-90

IMP-90B

Dual color LED curing light with photometer

Function & Features

- The white light diagnostic function
- Built-in light meter function
- Solidify all brands of resin materials
- High articulation optical fiber
- Four kinds of working modes
- Time modes: 5s-40s selected
- Automatic standby/Automatic shut down within 20s
- 5W Big power LED
- Low battery alert

Technical data

- Working Voltage: AC100-240V 50-60Hz
- Wavelength : 420-480nm
- Light power: more than 1600mw/cm²
- Solidification time and depth: 5s/3mm



LDL-90

Apex Locator



Features of Apex Locator

- Emulsion of Enlarging Apex

- Measure Apex Length
- Autoclavable for contrary electrode and file holder
- Accuracy in liquid condition
- Advanced measurement technology of multiple frequency network impedance
- Self Calibrating
- Easy Use



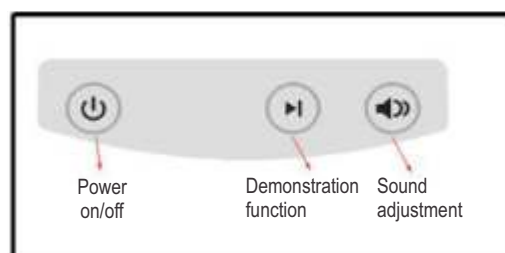
Assembling the Unit



Insert the probe cord



Testing the device by tester



Button



ENDO MOTOR SERIES & ACCESSORIES

Feature

1. Original Switzerland electro-motor
2. Color wide LCD screen
3. Drive-1:1 contra angle is available
4. Rotation speed and torque can be programmed to 9 settings
5. Auto torque reverse
6. Dual-frequency apex locator
7. 4 working modes
8. Auto apical reverse
9. Auto apical slow down
10. Auto start and stop
11. High capacity Li-ion chargeable battery
12. Auto power off and memory function
13. Both apex locate and endo at the same time

Technical

1. Adaptor working voltage : AC100-240V, 50/60HZ
2. 5 settings for adjustable rotational speed ranging from 125 to 625 rpm
3. Adjustable torque, range : 0.3-5.2N. cm (3-52mN.M)

Voltage/Weight :

1. Volume (cm): 24x21x9.5
2. Weight (KG)/PCS: 1.8
3. Packing material: carton

This product has been applied layout-design patent. Counterfeit must be investigated.

Accessories



Compatible Contract Angle
16: 1, Fit into NSK Endo mate



3 Work Models
M3: Endo Motor with
Apex Locator



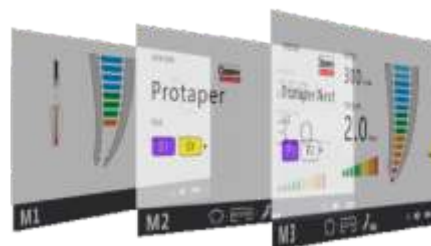
3 Work Models
M2: Endo Motor



Compatible Contract Angle
Pushbutton Small head



5" Color Screen



One Button Control
On/Off, Reverse / Forward



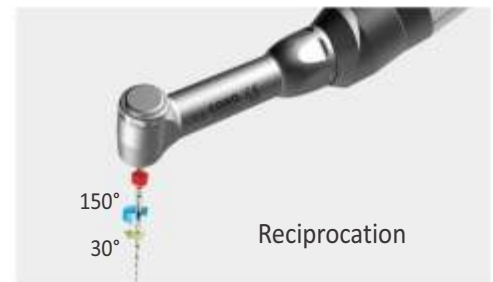
CORDLESS ENDO MOTOR & ACCESSORIES

Feature

- Slim for clearer sight
- Keyboard operating, easy to use
- Original switzerland surgical brush less motor
- File rotates clockwise when torque disappears
- Detachable 1:1 mini contra angle, multi-angle, can be autoclaved sterilization
- Rotation speed and torque can be programmed to 9 settings
- Reciprocating cutting mode
- Non-contact recharge design
- Auto power off and memory function

Technical

1. Adaptor working voltage : AC 100-240v, 50/60Hz
2. 5 Settings for adjustable rotational speed, ranging from 125 to 625rpm
3. Adjustable torque, range: 0.6-3.9N.cm (6-39mN.M)
4. Volume (cm) : 19x13x6
5. Weight (kg) /PCS : 0.7
6. QTY per master carton : 12 pc/ctn



▲ Clinical image

1 Easy access and Excellent visibility

- Miniature head allows access even to the most difficult to reach areas
- Slim neck assures higher visibility



X-RAY MACHINE & PORTABLE X-RAY MACHINE

Handled PORTABLE X-RAY



For that Perfect X-Ray **A & T Medical Systems** is a hand-held and battery powered intra Oral X-Ray. It combines the superior performance of a DC X-ray with the convenience of portability. The design enables easy hand held positioning and usage producing superior images on either film or digital receptors.

**Gun Type Design
for Easy Handling and use**

**70kv, Long Cone & 0.4 mm Focal Spot
for the Best Images**

**X-RAY Leakage on the Surface is 7 Times
Lower than AERB Limits**

**Digital Angle Indicator
for Proper Positioning**

**Economically Priced
with Attractive Payment Options**

GENERAL SPECIFICATION

Output kv	70kv, DC
Tube mA	2.3mA, Fixed
Exposure Time	0.01s-1.0s
Focal Spot	0.4mm, IEC
Battery	Li-ion Rechargeable
Leakage	<0.03mGy on the Surface
Cone Length	(SSD) 200 mm, Fixed

X-RAY MACHINE

X-RAY MACHINE



Product Data

Power Supply : 230V +- 10 %

X-Ray tube : 70kV, 10mA

Focal spot : 0.8mm x 0.8mm

Focus to the skin distance : 20 cm.

Filtration :1.5 –Al

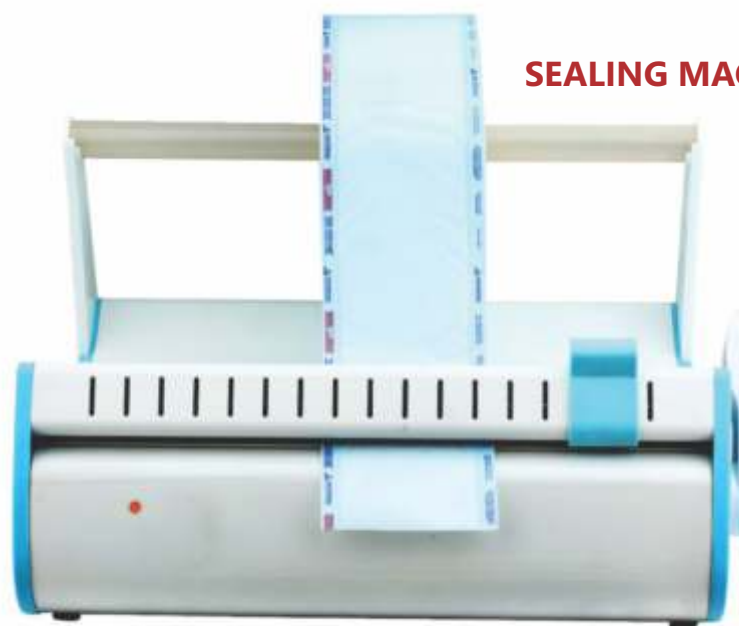
Exposure times : 0.1s to 2.99 s

Anatomic programs (Optional)

30 pre- set times with cordless remote

Micro processor base timer with cordless remote for time setting and exposure

ANT-X WALL MODEL SCISSORS ARM



SEALING MACHINE

IMPLANT MOTOR

Model : MUN C

The improved versions MiniUniko, designed and manufactured in **ITALY**, combine ease of use and practicality with top torque performance, full safety and operating precision with any implant system.

AT 20L optic contra-angle for led motors : 20:1 reduction, external and internal irrigation. Top reliability and high torque.



AT 20L classic contra-angle 20:1 reduction, external and internal irrigation. Top reliability and high torque.



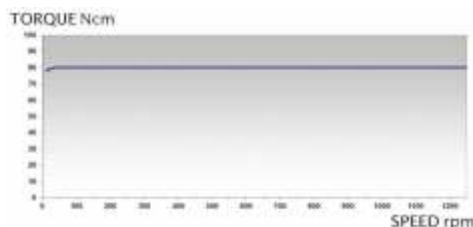
Immediate use and practicality

New practical PERISTALTIC PUMP : fast tube replacement and efficiency
Easy touch keyboard and wide display
Multifunction foot-control with accurate variable speed pedal, reverse , irrigation pump, programs change (optional for MUN.F version)



Constant top performance

Newest generation brushless motor and electronic control
Accurate adjustment of speed and torque up to 40,000 rpm and 80 Ncm
Extended service life of parts that require autoclave sterilization : motor, cable and connector



New generation brushless motor with more power



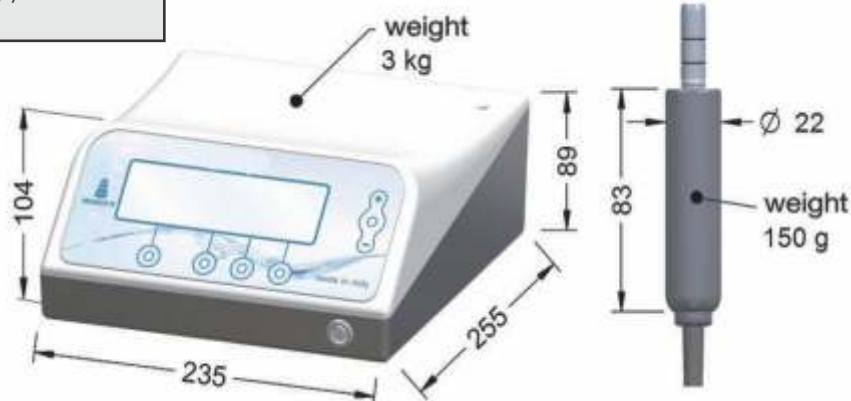
Special protection for sterilization

Main Specifications :

Power supply : 230 V - 115 V ; 50/60Hz
Absorbed power : 109 VA
Precise Torque adjustment : max 80Ncm (32:1), 70 Ncm (20:1)
Precise Speed adjustment : 400-40000 rpm
Insulation : Class I, type BF
Peristaltic pump max irrigation : 90 ml/min.
10 settable programs
Irrigation and led functions, automatically / separately activated with the motor start



Reg. n. 3443
UNI EN ISO 9001:2008
UNI EN ISO 13485:2012



SCALER SERIES

KAVITRON LED



Power input : AC100V-240V 50Hz/60Hz 1A
 Host input : DC24V 1A
 Output power : 7-17(VA)
 Work frequency : $30 \pm 3K$ HZ
 Water input pressure : 0.01Mpa~0.5Mpa
 Size : 181mm*157mm*78mm

With LED Light

Detachable handpiece with LED light



Original created

Seat can be autoclaved under high temperature and high pressure



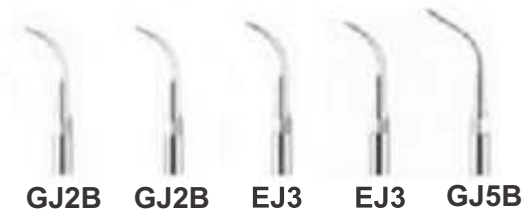
Original created

The bottom can also be autoclaved under high temperature and high pressure



GJ2B GJ2B GJ3B GJ3B GJ5B

Kavitron



GJ2B GJ2B EJ3 EJ3 GJ5B



Power input : AC100V-240V
 Host input : DC24V 1A
 Output power : 7-17(VA)
 Work frequency : $30 \pm 3K$ HZ
 Water input pressure : 0.01Mpa~0.5Mpa
 Size : 160mm*110mm*50mm

H3:detachable titanium alloy handpiece can be autoclave.



G3 fixed handpiece



AUTOCLAVE SERIES

SUN-23-II-P

Three colors can be choosed: purple, orange and blue
Technical parameters:

Voltage Power Tank capacity inside dimensions Packing
dimensions Weight 110V-240V/50Hz-60Hz2000W23
Liters Ø240*465740*520*500mm 56kg

PRODUCT FEATURE :

1. Based on the new class B, have 3 pulsating cacuum, Vacuum up to -0.9 Bar (-0.09Mpa), Residual humidity is <0.2. Suitable to sterilizing wrap, unwrap solid, porous, hollow device.
2. Computer-controlled, Use imported & advanced 16 bit microprocessor, easy to operate, Most suitable for the Dept of Stomatology, Ophthalmology, Surgery and Lab.
3. Using B&D test and vacuum test procedures to test penetrability.
4. The jet type of steam generator, ensure the efficient sterilizing.
5. Withing alarm system for water tank, avoid the waste water tank, avoid the waste water to enter into the sterilizing completely.
6. Precise digital display and advanced self-test system ensure you get the working date freely.
7. Double lock door for safety during operating.
8. Optional inbuilt mini-printer or USB connector to record the process of sterilizing.



Cooker Type Auto Clave



1. Tank capacity 10 to 12 Ltr.
2. Power Coated
3. 220 AC voltage supply

Ultrasonic Frequency	42,000 Hz
Tank Material	Stainless Steel SUS304
Tank Capacity	2500 ml
Timer	Digital timer with 5 Cycles (180/280/380/480/90 seconds)
Power Supply	AC 100 - 120V. 50 / 60 Hz AC 220 - 240V 50 / 60 Hz
Power	160 W (AC110V-120V); 170W (AC220V-240V)
Unit Size	35X26X26 cm (L x W x H)
Unit N.W.	3 KG

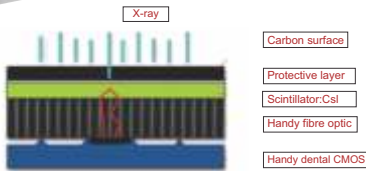
Digital Ultrasonic Cleaner



- Lengthened tank
- Radiator fan
- Stronger transducer
- Wet-proof PCB
- 5 Cycles digital timer
- Three separable wires
- Heater
- Industry IC
- Circuit protector
- Strong plastic housing

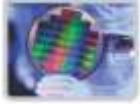


RADIO VISO GRAPHY (RVG)



Advanced FPS with CsI:Ti technology:

- Higher sensitivity plus higher resolution
- Best image quality with lowest X-ray dose



APS CMOS technology:

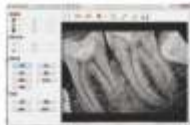
- 18.5µm pixel size
- 5T pixel type
- Theoretical resolution as 271p/mm



- **TWAIN driver**, which works compatible with the software of KODAK, SIRONA, SCHICK, etc.

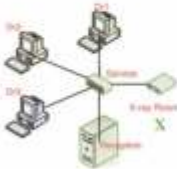


HDR 500/600



New Handydentist software:

- Easy to use
- Powerful image processing & preprocessing
- Net version for multi-user solution
Easily connect to PACs system under DICOM 3.0 protocol.

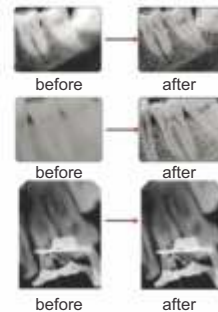


Multi-user solution

- <HandyDentist> net version provides multi-user solution and every user may share the information in database
- Plug and play connector allows the sensor to be moved from room to room freely.

The Effect of image process:


- Powerful image processing algorithms make it much easier to read the image information



HDR System
Digital Intraoral Sensor
HDR-500/600



Sensor

Specification		
Item	HDR 500	HDR 600
Sensor		
Chip Type	CMOS APS	
Fiber Optical Plate	Yes	
Scintillator	GOS	
Dimension	27.5 x 38.5mm	32.3 x 44.3mm
Active Area	22.5 x 30mm	27 x 36mm
	675mm²	972mm²
Pixel size	18.5µm	
Image Pixel	1.9M(1600*1200)	2.7M(1920*1440)
Resolution (lp/mm)	Theoretical:27 lp/mm Measured>12-14lp/mm(GOS)	
Operation system	Windows2000/xp/Win7 /Win 8(32bit&64bit)	
Additional	TWAIN Driver	

USB INTRA ORAL CAMERA

USB INTRA ORAL CAMERA

Features:

- * New Nice design.
- * Super-wide automatically adjusting-focus lens.
- * 2.0Mega Pixels, 1/4" Sony CCD.
- * With mirror function.
- * Holder with the automatic power off function.
- * USB 2.0 output.

Specification

Image Sensor	: 1/4" Sony CCD
Image Resolution	: 2.0 Mega Pixels
Output plug	: USB
Lamp	: 6 pcs white LED(5600K)
Accumulation Point	: 3~50mm
Photographing Visual angle	: 105°
Power supply	: DC 5V(Provided by computer)
Cable length	: 2m



IOC Mobile

Features:

1. Accredited by ISO9001, RoHs and CE system.
2. Win national patent right.
3. Wholly made from imported medical resin.
4. Unique 3.8mm micro lens, LED light.
5. The handle is made of water resistant material, reaching to Ip65 level, which can be soaked in and sterilized with alcohol.
6. 1200mA battery and long standby time
7. Ergonomic design and elegant in fashion
- 8) The probe is designed according to the human ear length, family healthcare, beauty, hospital etc.

Technical Specifications:

1. Multi-colored TFT LCD:3.0 LCD monitor
2. Resolution:960*480
3. Brightness: 5 level adjustable
4. Diameter of probe:3.8mm
5. Supply time: ≥4 hours
6. Battery capacity (mA): 1200mah
7. Product size : 11.9 x 6.5 x 13.3mm
8. Package size : 22.3*12.2*5.7cm
9. Power requirements:AC110-220V, DC5V.

SUCTION MACHINE



A&T-30

Main Applications:

Minor OT's
Intensive Care Unit
Emergency Department
Wards



A&T-36

Main Applications:

Minor OT's
Intensive Care Unit
Emergency Department
Wards
Dental Clinics

ATP-30 Back View (Manual Suction)

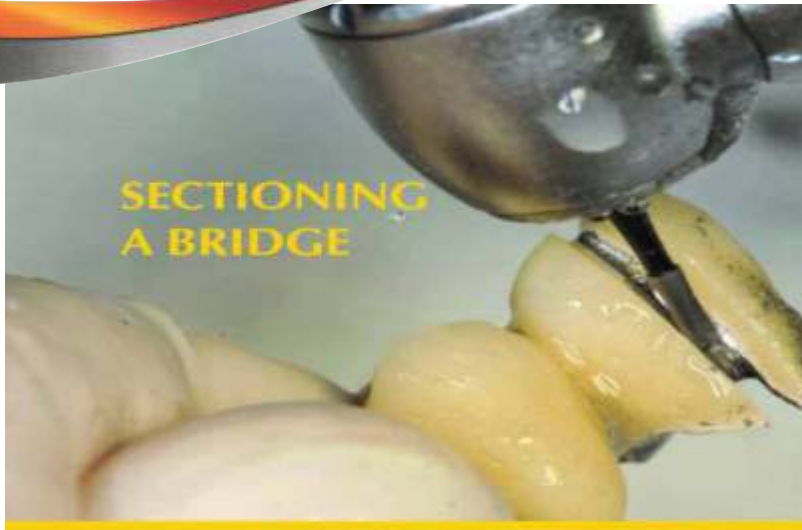


TECHNICAL FEATURES

Model	A&T-30	A&T-36
Housing	MS Powder Coated, SS Top on two wheels	MS Powder Coated, SS Top on two wheels
Max. Vacuum / LPM	Electric -600 mm Hg, 45 Ltrs / min Pedal -600mm Hg, 200 ml /push stroke	-700 mm Hg, 25 Ltrs / min
Pump Type	Electric - Diaphragm / Pedal - Piston	Single Rotary Vane Pump
Jars	2 x 2 Ltr. PC Jar	2 x 2 Ltr. PC Jar
Filter	Bacterial Filter Autoclavable / Reusable	Trap Filter
Tubing	10 mm ID x 2 mtr. (PVC)	8 mm ID x 2 mtr. (PVC)
Vacuum Gauge	6.25 cm dia 0-760 mm Hg	6.5 cm dia 0-760 mm Hg
Power Supply	220 V AC, 50 / 60 Hz 90 Watt	220 V AC, 50 / 60 Hz 180 Watt
Noise Level	55 dB A \pm 3	55 dB A \pm 3
Dimensions	42 x 39 x 64 cms	43 x 30 x 62 cms
Net Weight	15.5 Kg	24 Kg
Overflow Safety	Dual Mechanical	Dual Mechanical
Optional	110 V	110 V
Certifications	CE, IEC 60601-1-2012	CE, IEC 60601-1-2012

TRIHAWK BUR

TRIHAWK BUR



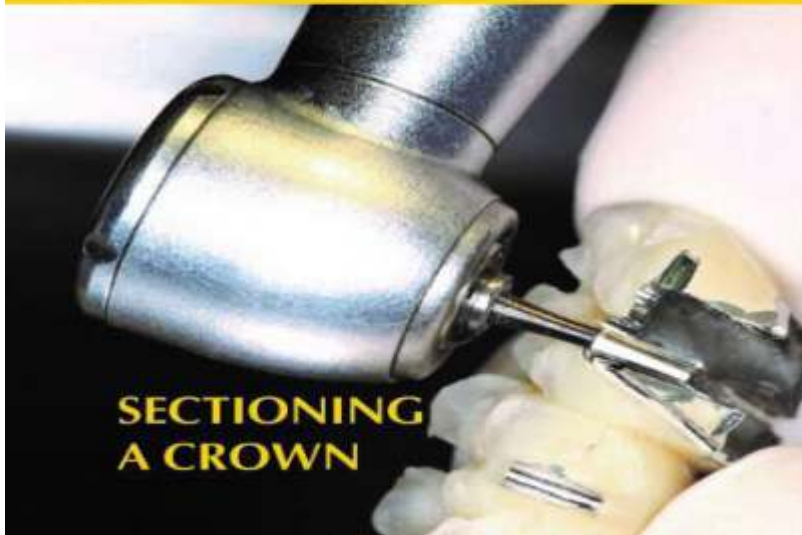
SECTIONING
A BRIDGE



AMALGAM
REMOVAL



CAVITY
PREP



SECTIONING
A CROWN



CROWN PREP

A fast - cutting, chatter - free, Universal bur, Cuts quickly both vertical and horizontally- Eliminates the cost of sterilizing and breakage. Each bur protected in an aseptic packet.



Talon 12
Multipurpose Metal
cutting Bur



7901
Composite carving
finishing Bur



Surgi 6 -
FG Surgical
Bur



140-014
Zirconia cutting
Bur

Ten Reasons

to choose
Tri Hawk burs...

1. Cut both vertically and horizontally
2. Mat-black, no-glare finish
3. Virtually unbreakable
4. Cut easily through all types of metals plus crowns and tooth enamel
5. Convenient, aseptic, hospital-style packaging
6. No chrome, nickel, or other heavy metals
7. RC Access Opening
8. Bur No. 7901 for Composite finishing
9. Surg 6 - Surgi 12 for Surgery
10. Zirconia Cutting Bur



LASER LIGHT SERIES



Tip with metal connector
-Steady Power Output

- › Accomplish Primarily 0.8-1.4w Soft Tissue Laser Dentistry
- › Handy & Economy & Easy
- › Latest Laser Technology Incorporated



Tip Bending Tool



Laser Assisted in
ROOT CANAL DISINFECTION



FRENECTOMY



Before



After
Laser Assisted in
PERIODONTAL TREATMENT

Advantages in Dentistry with Dental Lasers

Less and some times No Blood Loss for Surgery
Optical coagulate precisely at same time
Avoid collateral tissue damage, increase tissue-protecting surgery
Minimize post-operative inflammation and discomfort
Controlled depth of laser penetration accelerated patient healing
Increase patient turnover rates with more efficient laser procedures
Reduce patient discomfort and the need for anesthetic
Effective Treatment of Oral Therapy
Sensitively is Detected On Time

Benefits

Practitioners :

- Free expression of dental mastery and expertise.
- Preset options and / or choice of user settings.
- Dental clinic revenue boosts (over 30%) shortening treatment duration and increasing ability to perform more treatments.
- Increased marketable visibility and prestige for dental clinics.

Patients :

Enhanced overall patient experience-Rapid healing, healthier treatment
Increased patient satisfaction: reduced anesthesia, scarring, swelling, bleeding and post-operative sensitivity
Patient loyalty and trust is restored as the patient fear of procedures is completely removed

Soft Tissue
Laser Pen Shortening
Treatment



UV CHAMBER & LEAD APRON

UV CHAMBER



LEAD APRON



Features:-

- Specially designed for the Surgical theater
- Easily slides out from under a surgeon's scrubs when taking off
- Maximum frontal protection
- Adjustable velcro panels for improved fit
- Ergonomic design equitably distributes weight
- All Apparels comes 0.25mmPb, 0.35mmPb & 0.50mmPb.

Oil Free Dental Air Compressor
Power : 550 W or 1 H.P.
Air Container Volume : 35 Litre
Noise : 55 db
Max Pressure : 115 PSI

Key Feature:

1. Easily Operate on 2 battery Inverter (1400 VA)
2. Internally Coated tank for protection from Rust
3. Motor with thermal protection

COMPRESSOR



1 HP DENTAL AIR UNIT

MEDICAL WASTE MANAGEMENT

Model No : A&T 727

Size : 480 x 550 x 940 mm

Volume : 102 Ltrs



Model No : A&T 729

Size : 400 x 400 x 435 mm

Volume : 16 Ltrs



Model No : A&T 756

Size : 5 Ltrs, 7 Ltrs,

11 Ltrs, 22 Ltrs

SS Pedal Dustbin



Model No : A&T 759

Size : 10" x 14", 10" x 28",

12" x 24", 12" x 28"

Ash Bins



Model No : A&T 762

Size : 360 x 360 x 865 mm

Volume : 60 Ltrs



Model No : A&T 765

Size : 430 x 630 mm

Volume : 55 Ltrs

Material : Plastic



Model No : A&T 766

Size : 180 x 480 x 420 mm

Volume : 21 Ltrs



Model No : A&T 789





A & T Medical Systems

Worldwide Reach: -

A&T Medical Systems have a large number of customers in india many different countries worldwide. A&T Medical regularly gets orders from private companies and end-user in different countries in Africa like Togo, Benin, Niger & many more to add...

A Request :-

Please visit our websites and send your inquiries including those related to tenders, indicating your expectations which, you will discover, are realized in the best A&T traditions. The literature will be sent gladly. We want to see you among our large number of satisfied and happy Customers.

A & T Medical Systems

Regd. office :

RZ-D2/158, Gali No. 5, Mahavir Enclave, New Delhi – 110045

Corporate office :

B-34, Lane-9, Sevak Park, Near Dwarka Morh Metro Station
New Delhi - 110059

Contact : 09999937240, 09899908353

E-mail : anshulwari27@gmail.com

Web : www.atmedical.in

Social Media



Branch offices :

Delhi, Gurgaon, Agra, Meerut, Dehradun, Saharanpur, Lucknow, Bihar, Raipur, Rudrapur, Chennai